

SIZE CHART

HOW TO DETERMINE YOUR SIZE

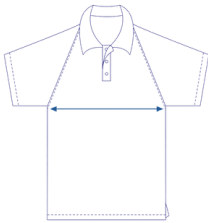
You will need:

- ▶ Tape measure
- ▶ A garment similar fitting to the one you wish to purchase

1. Lay the garment flat on a hard surface
2. Measure the garment across the chest as shown



**WE RECOMMEND
SIZING UP IF YOU ARE
IN BETWEEN SIZES**

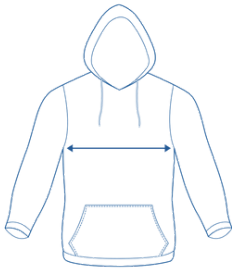


Polo NAVY							
Size	S	M	L	XL	2XL	3XL	5XL
1/2 Chest (cm)	52	55	58	62	65	71	79

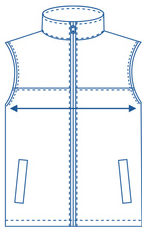
Polo BLACK													
Size	J10	J12	J14	XS	S	M	L	XL	2XL	3XL	4XL	5XL	6XL
1/2 Chest (cm)	43.5	45.5	47.5	50	52.5	55	57.5	60	62.5	65	67.5	70	72.5



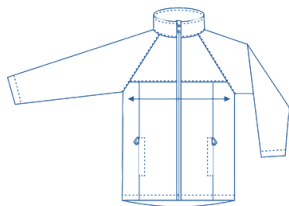
Rugby Jumper													
Size	J2	J4	J6	J8	J10	J12	J14	XS	S	M	L	XL	2XL
1/2 Chest (cm)	36.5	38.5	40.5	42.5	44.5	46	50	50	53	57	62	65	68



Hoodie													
Size	J2	J4	J6	J8	J10	J12	J14	XS	S	M	L	XL	2XL
1/2 Chest (cm)	37	39.5	41	42.5	44.5	47.5	50	52.5	55.5	58	61	64	67



Vest							
Size	S	M	L	XL	2L	3XL	5XL
1/2 Chest (cm)	57	59	61	63	65	70	78



Softshell Jacket												
Size	2XS	XS	S	M	L	XL	2XL	3XL	4XL	5XL	6/7XL	8/9XL
1/2 Chest (cm)	67	70	72	74	76	78	80	82	83	84	86	89



02 4321 0433



info@alinta.com



berrystreetschool.alintaapparel.com.au